

GOLF

Destinations

THE OFFICIAL DINERS CLUB GUIDE TO SUPERIOR
GOLFING DESTINATIONS IN SOUTHERN AFRICA

2000



Diners Club
International®

EDITORIAL DEPARTMENT

Editorial Director Mercedes Westbrook
Editor Victor Anderson
Chief Sub-editor Roy Johnson
Editorial Assistant Theresa Favini
Editorial Enquiries Redsand Publishing
 Tel: (011) 784 3900
 E-mail: mercedes@redsand.co.za
 All editorial correspondence to
 PO Box 784769, SANDTON 2146

ADVERTISING DEPARTMENT

National Sales Manager Donovan Lai
Sales Executives Chris Pitts, Bradley Kantor,
 Dominique Nel, Neville Short,
 Jonathan Setter
Advertising Enquiries Redsand Publishing
 Tel: (011) 784 3900
 E-mail: donovan@redsand.co.za
 All business correspondence to
 PO Box 784769, SANDTON 2146

PRODUCTION DEPARTMENT

Design Director Kerry-Anne Hayes
Design & Layout Janine Bloch, Kerry-Anne Hayes
Assistant Designer Eldrina van der Merwe
Cover Design Sean Frew
Junior Designer Jackie Guest
Media Co-ordinator Jann Henderson
Reproduction Dataprint 24 Seven
Production Enquiries Redsand Publishing
 Tel: (011) 784 3900
 E-mail: kerrya@redsand.co.za
 All production correspondence to
 PO Box 784769, SANDTON 2146

PHOTOGRAPHY

Contributors Touchline, Rick Mathews,
 Sun International, Chris Marais,
 Roger de la Harpe, Stewart Johnson,
 Edzard Meyberg, Erinvale Golf Club,
 Fancourt, Royal Cape Golf Club,
 De Wildt, Singita

PUBLISHERS

Publisher Mark Leven-Marcon
Joint Managing Director Grant Viljoen
Administration Director Colleen Kreser
Marketing & Distribution Manager David Ralph

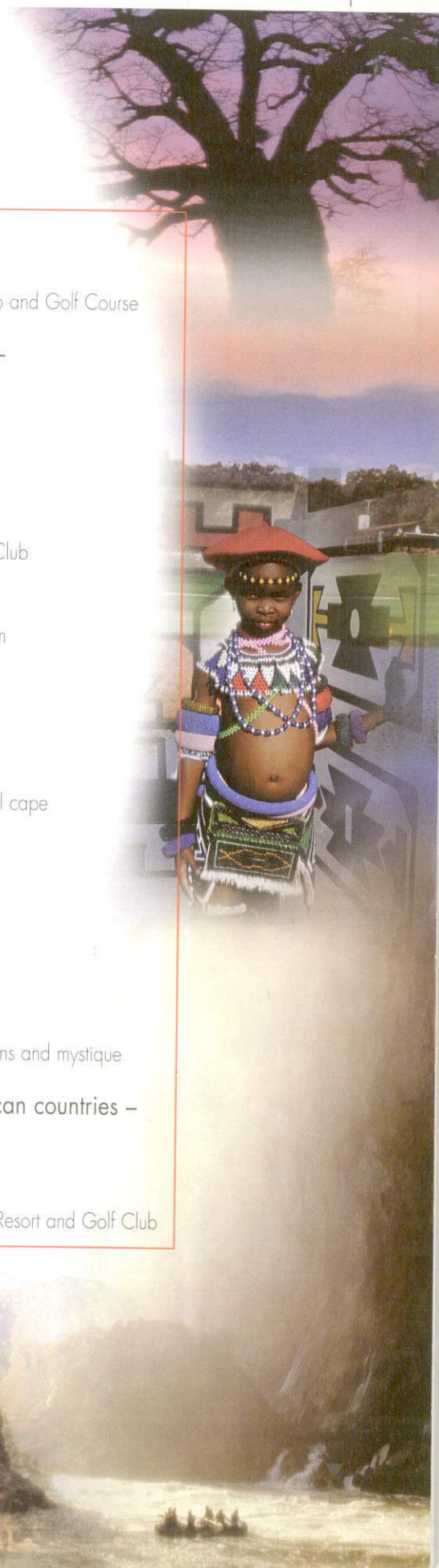
REDSAND
 THE LEADERS IN CUSTOM PUBLISHING

Copyright © by Redsand Interactive (Pty) Ltd. Reg. No.2000/000044/07 (ISSN 1028-8406).
 All rights reserved. Golf Destinations is published annually by Redsand Interactive (Pty) Ltd,
 3rd Floor, South Block, Southern Life Gardens, 6 Protea Place, Sandton.

All manuscripts, editorials and illustrations must be accompanied by a stamped, self-addressed envelope. Responsibility cannot be held for unsolicited material. The editor reserves the right to amend and alter copy. The publishers can accept no liability of whatsoever nature arising out of or in connection with the contents of the publication.
 The views and opinions expressed in Golf Destinations are not necessarily those of the editor or the publisher.

**contents**

- 76** Course profile:
Graceland Country Club and Golf Course
- 81** Northern Province –
Land of contrasts
- 82** Course profile:
Hans Merenski
- 86** Course profile:
Magalies Park Country Club
- 87** North West –
Playgrounds and platinum
- 90** Course profile:
Pecanwood Estate
- 95** Western Cape –
The world's most beautiful cape
- 98** Course profile:
Tanglewood
- 100** Course profile:
Mowbray Golf Club
- 109** Zimbabwe –
The land of lost civilizations and mystique
- 115** Other Southern African countries –
Variety is the spice of life
- 116** Course profile:
Belle Mare Plage Beach Resort and Golf Club



Africa's outback

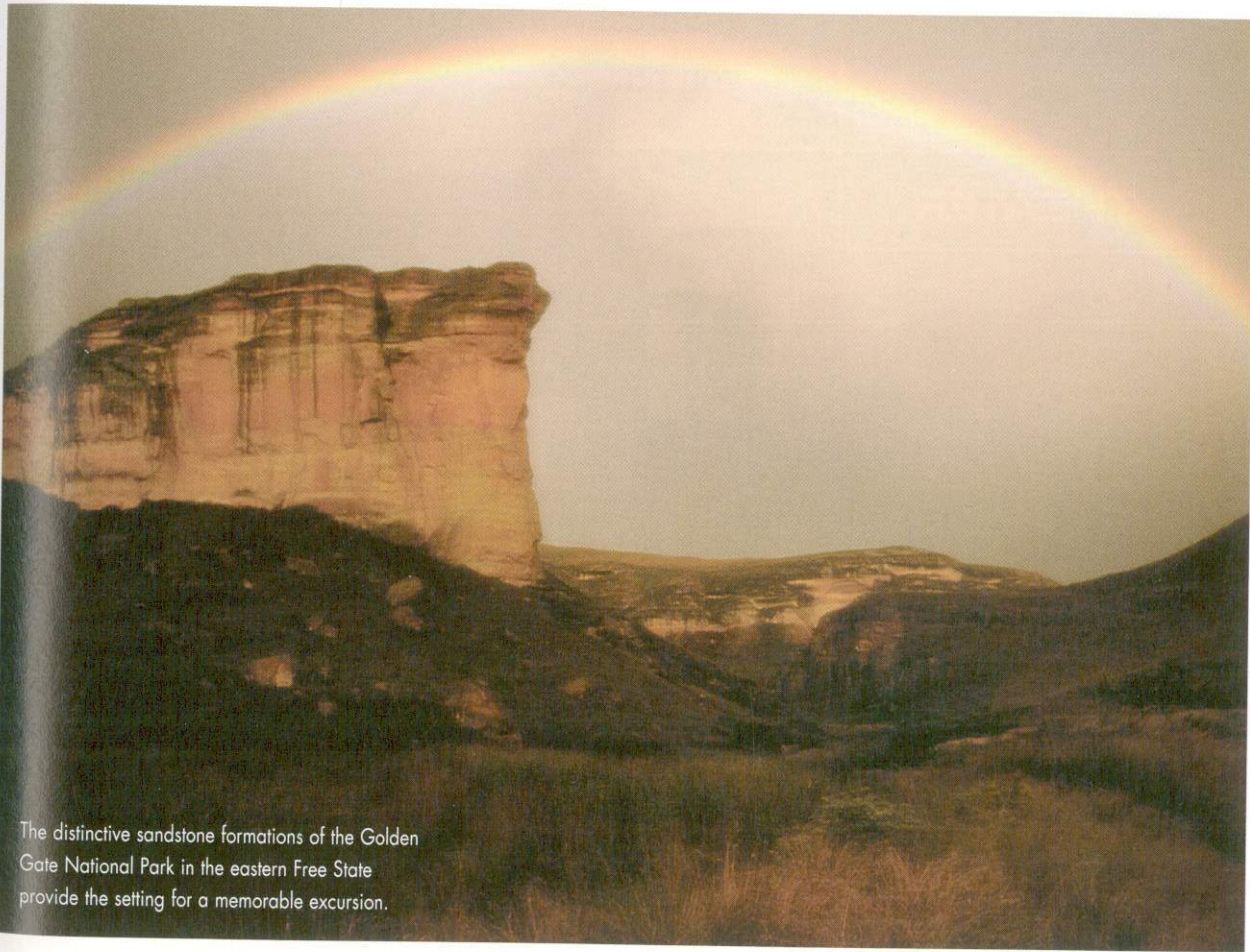
The combined domain of the Free State and the Northern Cape makes up approximately 30 percent of South Africa's total land area, but it remains by far the least populated of South Africa's nine provinces.

THIS expanse of territory has extensive areas of dry, rugged semi-desert punctuated by small settlements. It would be misleading, however, to assume that this is a place devoid of interest and beauty. On the contrary, the Northern Province possesses some of the most unique environments and scenery on the planet, with the 100 million year-old mountainous desert region of the Richtersveld among the most ancient of the earth's landscapes.

Desert, water and fields of flowers

The floral kingdom of Namaqualand and the Kalahari regions of the

Northern Cape are equally unique, although very different. Visitors travel vast distances to Namaqualand for the world's most spectacular flower show, when thousands of wild flowers open their blossoms to the sun, an event which takes place for a fleeting period after the smattering of summer rains. The ever-shifting red dunes of the Kalahari Desert, in contrast, are the home of the last of the San people, better known as the Bushmen, while the Augrabies Falls on the Orange River, west of Upington, flows all year round. Yet another wonder of nature in this region is the Kalahari Gemsbok National Park situated in the extreme north.



The distinctive sandstone formations of the Golden Gate National Park in the eastern Free State provide the setting for a memorable excursion.

Cityscapes

Kimberley is the Northern Cape's premier centre, complete with the world's largest ever man-made hole, which is 800m deep – today three-quarters full of water. By the Hole's closure in 1914, however, 28 million tons of ore had been excavated by hand. There is a fully restored mining town on the site, complete with its own ghosts, dating back to the time of South Africa's famed diamond rush in the early 1870s, which provides a fascinating insight into life at the diggings.

The Great Karoo, the vast semi-desert area covering a large part of the country, is situated partly in three regions, the Northern Cape, Western Cape and Eastern Cape. The Karoo is largely overlooked as a tourist destination but it is a good place to go for restful farm holidays, hiking and communing with nature.

The Free State

When the Boers crossed the Orange River in 1836 to escape British Rule, they named the region the Orange Free State – today it is known for its gold deposits and agriculture.

Bloemfontein is the province's capital as well as the judicial capital of South Africa, often affectionately called the City of Roses. The eastern Free State is Drakensberg mountain country and, besides the very beautiful Golden Gate National Park, there are several other mountain-resorts worth



The Augrabies Falls on the Orange River near Upington.

visiting at or near places such as Bethlehem, Clarens, Fouriesberg and Harrismith. The Thaba-Nchu Sun near Ladybrand is a popular casino resort.

GOLFING HIGHLIGHTS

Sheep farmers in desert areas are not immune from being bitten by the golf 'bug' and, as a result, courses have been built in the most inhospitable and unlikely regions of the world. The Karoo is such an example and many courses – including those with sand greens and sand fairways – can be found in various small towns. The nine-hole course at Springbok, for instance, in the Northern Cape, may be no match for Pebble Beach or St Andrews, but it's a golf course, and members here are as enthusiastic about the game as anyone anywhere. Apart from these unusual courses, there are some fine, well-watered courses in Bloemfontein, Kimberley, Welkom and Sishen which are more conventional in their playing surfaces.

don't miss

The Augrabies Falls National Park in the Northern Cape is only an hour's drive from Upington. The mighty Orange River plummets 146m in this 9km stretch and then continues on its way through the spectacular granite chasm, 240m deep and 18km long. The falls themselves are 93m high.

Bloemfontein Golf Club

The history of this 18-hole course stretches back to 1894. It was 100 years later, in 1994, that Peter Matkovich and Dale Hayes were assigned to extensively remodel and upgrade the existing layout, with extremely successful results. This is a fine course now, with a tough closing stretch of holes rivalling the best in the country. The 143m 16th hole requires accuracy and nerves of steel to play it well. The back, left and right-hand sides of the green are protected by water; the front-left of the green is protected by a sand trap. Prudence is the order of the day here! Reservations can be made on +27 (51) 470 571.

10 best reasons to visit

- The Bloemfontein Rose Festival held every spring (October).
- The Augrabies Falls and surrounding area.
- The Namaqualand region shortly after the summer rains.
- The mountainous lunar landscape of the Richtersveld.
- Kimberley's 'Big Hole' and the restored mining museum.
- The sandstone formations of the beautiful Golden Gate National Park.
- The Sand du Plessis Theatre, one of South Africa's finest live-entertainment venues.
- Bloemfontein's waterfront situated in the city at Loch Logan.
- Kings Park garden in Bloemfontein boasts a collection of more than 4 000 roses. The Orchid House and nearby fragrance garden for the blind are also worth a visit.
- The Basotho Cultural Village in QwaQwa offers insight into the lifestyles and crafts of the local culture.

Kimberley Golf Club

Cecil Rhodes was a member here in the 1890s when he was Premier of the Cape Colony. Today, the club has a thriving, enthusiastic membership and there are some good holes on a well-kept, interesting course. Freddie Tait, one of the greatest golfers to come out of Scotland, was killed in action near here during the Anglo-Boer War. He had earlier bequeathed his putter to the club, now on display in the Freddie Tait golf museum. Kimberley hosts the annual Barney Barnato tournament in the last week of October. The 1999 event involved some 470 players. The course also has top-quality practice facilities. Reservations can be made on +27 (53) 841 0179.

Oppenheimer Park Golf Club

This well-kept, tree-lined parkland course in Welkom is situated next to a dam. Designed by Robert Grimsdell and officially opened in 1951, the course is owned and subsidised by the giant Anglo American Corporation. It is named after the Oppenheimer family, who have been mining magnates in South Africa for about a century. Water is featured at five out of seven holes from the sixth to the 12th. Other facilities include accommodation (on the premises) at 'the Pines', squash and tennis courts, a driving range and a pub/restaurant. Bookings can be made on +27 (57) 353 2131.

don't miss

The Free State and Northern Cape is a very large area, which has a number of varying yet interesting landscapes. The Golden Gate area in the Eastern Free State, and the Northern Cape's Namaqualand and Richtersveld areas are the most striking and beautiful to tour, hike or visit for climbing.

Schoeman Park Golf Club

Right next door to Bloemfontein Golf Club, Schoeman Park has been described as the jewel of Free State golf courses. It is a challenging, well-grassed, 18-holer which has often hosted provincial and national amateur events, as well as tournaments on the Vodacom professional tour. Bookings can be made on +27 (51) 408 3812.

Sishen Golf Club

Designed by leading South African golf architect, Robert Grimsdell, in the late 1970s, Sishen is a stunningly beautiful and high-quality championship course near Kathu in the Northern Cape. There are close to a thousand large camelthorn trees on the site. Not only do these provide plenty of shade in a dry and thirsty environment, but their long branches overhang many of the fairways. As a result, the golfer must be very precise when it comes to taking shots. The fairways are nourished with water from the nearby iron-ore mine. Playing Sishen is one of the highlights of a golfing holiday in South Africa, and the course itself remains one of the top ten courses in the



ABOVE: Bloemfontein Golf Club, which was redesigned by Peter Matkovich and Dale Hayes in 1994, is one of the city's highlights.

BELOW: The brief spectacle of the Namaqualand flowers draws admirers from all over southern Africa.

country. For reservations call Greg Jennings on +27 (53) 739 2290 or 082 453 2290.

ALSO RECOMMENDED

Bethlehem Golf Club: +27 (58) 303 4656. Kroonstad Country Club: +27 (562) 125 169. Harrismith Golf Club (on the N1 freeway between KwaZulu Natal and Gauteng): +27 (568) 230 468. Sand River Golf Club (Virginia): +27 (57) 212 2676. Parys Golf Club (golf on an island on the middle of the Vaal River): +27 (58) 811 5618. **GD**

information**Free State Tourism Board**

Telephone +27 (57) 352 4820

Facsimile +27 (57) 352 4825

Northern Cape Tourism Authority

Telephone +27 (53) 833 1434

Facsimile +27 (53) 831 2937

E-mail: tourism@northerncape.org.za

Website: www.northerncape.org.za

Place where the sun rises

Mountains, panoramic passes, valleys, rivers, waterfalls and forests characterise the Mpumalanga landscape, home of celebrated big-game reserves. It is also the most easterly province, whence the meaning of the name – where the sun rises.



The beautiful Leopard Creek Country Club at sunrise.

PROMINENT among the many reserves in this area, the Kruger National Park is world-renowned, as are several of the luxurious private reserves on its western boundary. The entire area offers exceptional opportunities for bird-watching, hiking, horse-riding and fishing, and streams once panned for gold have become the haunts of eager anglers and lazy trout.

SCENIC ROUTES

Steeped in the history of pioneers, hunters and fortune seekers, fascinating gold-rush towns abound. Barberton and Pilgrim's Rest are among the most

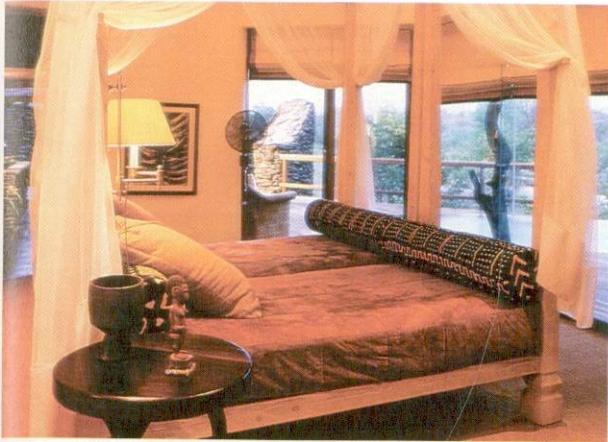
famous. The Middleveld region, inhabited by Ndebele people, noted for their decorative architecture, is a must.

GOLFING HIGHLIGHTS

Apart from the excellent game-viewing opportunities, this province is equally famous for its top-quality golf courses.

Graceland

This course, designed by Gary Player, is perhaps the only true links course



Top: Singita, which means miracle in Shangaan the local language, is one of a number of upmarket resorts which offers the tourist an unforgettable stay.

Above: Mpumalanga is big-game country. Here you will be able to view the Big Five as well as a host of other cats, birds and antelope.

in the country. Close to Johannesburg, near to Secunda, this is a championship course of international standard which is maintained in perfect condition. It also has the benefit of being part of a luxury resort which features superb accommodation and sophisticated entertainment with a casino worthy of Las Vegas. Many other sports are catered for at the resort, but the golf here is truly memorable. Bookings can be made on +27 (17) 631 3882.

Leopard Creek Country Club

Designed by Gary Player, with no expenses spared, Leopard Creek is primarily a private facility and some of the world's rich and famous have private lodges here. However, the course is open to the public on weekdays, provided they are guests at the nearby Malelane Sun Intercontinental Resort. This means that the course is never crowded. The Leopard Creek playing fee is R600 per person. The course is only a five-minute drive from the Kruger Park's Malelane gate. Golf and accommodation bookings can be made through Southern Sun Intercontinental Central Reservations on +27 (11) 482 7005. The course can be contacted on +27 (13) 790 3322.

Nelspruit Golf Club

The club is host every April to the annual, very popular Jack of the Bushveld Festival of golf, when hundreds of amateurs from far and wide descend on the town to play on the recently redesigned greens. There are no fairway bunkers at Nelspruit but this is compensated for by strategic positioning of trees (the locals call them 'bunkers in the air') on the course. The course facilities have had a complete overhaul and an extensive high-quality housing estate has been added. The club also features a pro shop, festive bar and a magnificent clubhouse, complete with lapa facilities. Bookings and green fee information can be obtained on +27 (13) 752 2188.

Sabi River Sun Golf Club

This very pleasant course forms part of a Southern Sun hotel, resort and timeshare complex. The course is very close to the Kruger Park, so the opportunity exists to conveniently combine golf and game viewing.

10 best reasons to visit

- Dullstroom – Mpumalanga's renowned trout fishing centre.
- The Bourke's Luck Potholes for fascinating formations carved by the swirling waters.
- God's Window, for a spectacular view overlooking the Blyde River Canyon.
- An insight into the history of the region's gold-rush days.
- The Kruger National Park and surrounding game reserves.
- The most upmarket privately-owned game resorts in the world.
- A trip or short stay in the old mining town of Pilgrim's Rest.
- The Sudwala and Echo Caves.
- A visit to the village of Wolwekraal (northwest Mpumalanga), home of the artistic Masanabo sisters, will be unforgettable. Their geometric ethnic designs have appeared on the tail-sections of a number of British Airways planes.
- Hot-air ballooning trips which can be arranged at the Mpumalanga sports centre, White River.

Big sky country

The Northern Province, which shares its borders with Botswana, Zimbabwe and Mozambique, is unquestionably one of the most scenically diverse and bewitching of all the non-coastal provinces.



The Northern Province is renowned for its majestic baobabs – Messina near the Zimbabwe border boasts the greatest concentration of these trees.

THE Northern Province is a region of contrasting landscapes and tribal diversity. There is the lush Letaba Valley, which is instantly reminiscent of the Western Cape's Hex River Valley, blanketed in tropical fruit farms. Further north is the densely wooded Soutpansberg ranges and the barren Mopane veld with its spectacular baobab trees. The sensational geographical scenery and charming towns and villages of the area are further enhanced by the northern section of the world-famous Kruger National Park and many exceptional private nature reserves.

The province is extremely hot in summer and sometimes quite humid – it is, as a result, prone to sudden fierce electrical storms in the lowland region

that momentarily offer some relief from the heat. Weather patterns vary considerably between mountainous regions and flatland but in general the heat is unremitting.

The Magoebaskloof Pass is one of the most striking in South Africa and winds through some of the loveliest scenery in the country between the towns of Haenertsburg and Tzaneen, over the Drakensberg escarpment. The 25km drive provides a wonderland of scenic contrasts from the thick pine forest plantations at the top of the high mist-shrouded Drakensberg Mountains. At the base of the escarpment are the cool grasslands and the subtropical valley of the Lowveld. Summer rains create numerous waterfalls

don't miss

The Magoebaskloof area, with the picturesque Ebenezer Dam in the valley, is one of South Africa's most prolific birding spots. Scenic indigenous forest walks and numerous water sports, including water skiing on the bilharzia-free dam, are on offer.



Fly fishing is one of the province's unexpected highlights.

in the mountains and the Debegegi Falls in the De Hoek State Forest is spectacular as it cascades over treacherous rocks into a crystal-clear basin at the bottom, which, in summer is perfect for swimming.

GOLFING HIGHLIGHTS

The golfing gem of the Northern Province is undoubtedly Hans Merensky Golf Club in Phalaborwa, which is as much a superb sporting facility as it is a well-stocked game reserve. Pietersburg, hub of the Northern Province, boasts a very good 18-hole course, as does Ellisras, which is situated in the west towards the Botswana border. As is typical of southern Africa, most little country (or 'platteland') towns have golf courses, many of them nine-holers with just a few dozen members and the Northern Province is no exception. Invariably, visitors are most welcome at these clubs.

Hans Merensky Golf Club

The highlight of the province, this championship layout is carved out of the bushveld which actually borders the Kruger Park, and game is as plentiful on the course as in the park. This course, in its time, has been host to lion and leopard, hippo, giraffe, buffalo, crocodiles, and many varieties of buck, birds and snakes. Stories, many of them humorous, are legion about golfers' encounters with wild animals on the course. Thankfully, all have happy endings. No-one has ever been seriously harmed and it is a very enriching experience to tee up here. The course is of a very high standard with some challenging water holes (beware the crocodiles in the hazards!) and it is not surprising that the club hosts a professional tournament every

year on the South African Vodacom Tour. Limited accommodation is available at the club, which also offers tennis, bowls, swimming and squash as well as an excellent restaurant and a large, friendly pub. Reservations can be made on +27 (15) 781 5649.

Pietersburg Golf Club

This is another fine bushveld course, with a grand new clubhouse and re-modelled greens by Peter Matkovich. It can be dry and bare here in mid-winter, but with bent grass greens it remains a challenging prospect. Pietersburg has produced a number of good golfers, the best-known being Retief Goosen. Bookings can be made on +27 (15) 295 4118.

Tzaneen Country Club

(Off R36 between Tzaneen and Duiwelskloof).

This is an undulating 18-hole course with considerable appeal and stunning views of the surrounding countryside. The indigenous trees on the course are magnificent and, in many instances, labelled. Around the 14th green, for instance are nine species to admire – among them the African flame, featherduster, forest fever, Natal mahogany and knobby fig. The club also has a fine bar and swimming pool. Bookings can be made on +27 (15) 305 3102.



An extensive area of the Kruger National Park falls within the province's borders. Leopard and other members of the Big Five have been known to visit Hans Merensky.

Also recommended:

Orangedene Golf Club, Letaba: +27 (15) 303 0917. Drakensig Golf Club, Hoedspruit: +27 (15) 799 3172. Thabazimbi Golf Club: +27 (14) 777 3087. Mogol Golf Club, Ellisras: +27 (14) 763 2427. 

information

Northern Province Tourism Board

Telephone: +27 (15) 288 0099

Fax: +27 (15) 288 0094

E-mail: ceo.nptb@mweb.co.za

10 best reasons to visit

- The Kruger National Park's northern extremities lie within the province. The Phalaborwa Gate is only a short drive from the town.
- The Magoebaskloof area is one of South Africa's top birding sites.
- The Azalea farm near Haenertsburg is simply spectacular during September when the flowers bloom.
- The Aventura Eiland (island) near Gravelotte in the Letsitele district is famous for its mineral springs. Accommodation and excellent game viewing in the area make this a popular family resort.
- The authentic Tsonga village within the borders of the Hans Merensky Nature Reserve is worth a visit. Here one can watch the locals make music and extract salt using traditional methods.
- The Hoedspruit Research and Breeding Center for Endangered Species is a must. Here, if you are lucky you will be allowed to handle cheetah kittens.
- The baobabs of Messina, South Africa's most northern town, represent the greatest concentration of this tree in the world.
- Timbavati, the province's most famous private game reserve and the original home of the legendary white lions, has a number of upmarket guest lodges within its borders.
- The Coach House, situated only 20km from the Lowveld town of Tzaneen, is the province's best known restaurant and hotel.
- The Lemba tribe, which resides in the Venda region of the province, has finally been proved to be related to one of Israel's 'lost tribes'. Geneticists have revealed that the Lemba men carry a DNA sequence that is distinctive to the *Cohanim*, a hereditary cast of Jewish priests.



Gomo Gomo

GAME LODGE

Gomo Gomo Game Lodge is an intimate bush experience in Africa. Situated in the untamed and prestigious Timbavati Game Reserve, Greater Kruger National Park.

Trained game rangers and trackers will share their knowledge and experience as you come face to face with Africa's Big Five – Lion, Leopard, Elephant, Rhino and Buffalo.

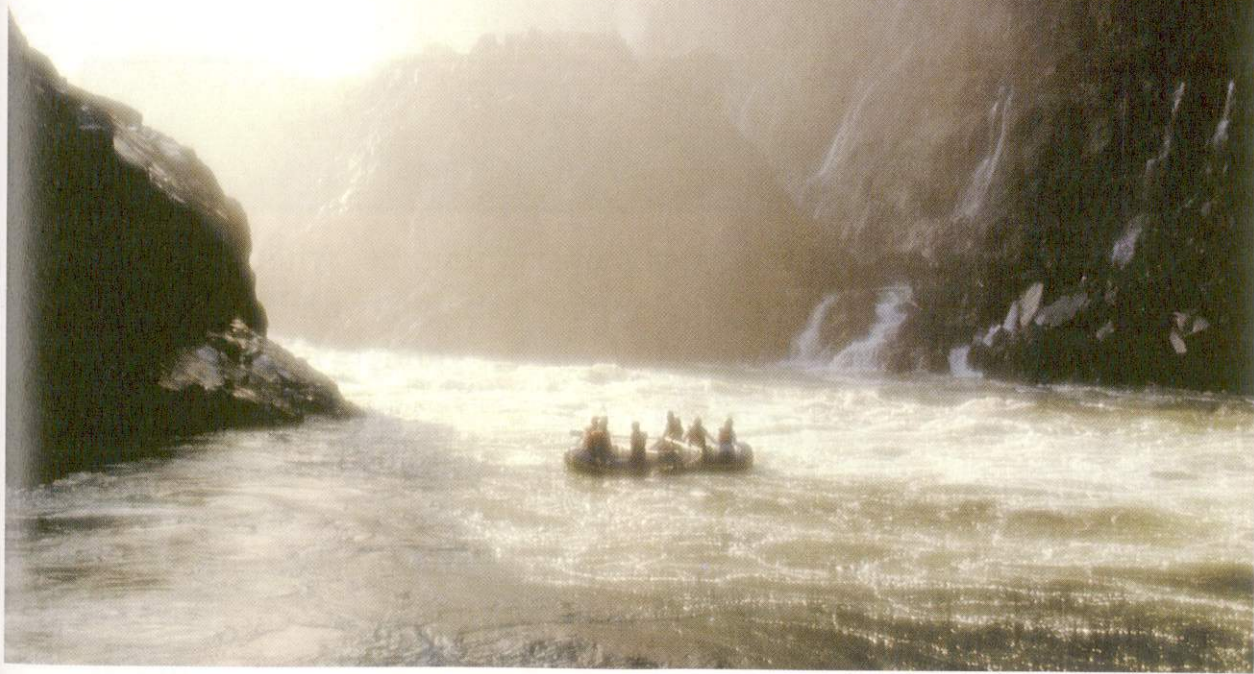
For the more adventurous, there are walking safaris accompanied by an experienced ranger.

Experience the Africa of your imagination

Contact address: PO Box 1705, Hoedspruit, 1380
 Tel +27(0) 15-793 2587 / 0116
 Fax +27(0) 15-793 2587
 e-mail: gomo@netactive.co.za

Land of mystery

The untouched paradise of Zimbabwe has its focus at the thundering Victoria Falls. However, this inexpensive destination is an unfolding landscape which has much to offer the golf tourist.



ZIMBABWE is a land of diversity, contrasts and unrivalled natural beauty. It is a land of adventure where one can experience nature first-hand, whether you are hurtling through the mighty Zambezi rapids, bungi-jumping off the Victoria Falls Bridge or game watching at sunset in one of the many wildlife sanctuaries.

Land of mystery

Harare, Zimbabwe's capital, is a convenient starting point for visiting the country's many tourist attractions. A prime example of a modern African city, Harare is a mosaic of high-rise office blocks and well-preserved, historic buildings, all situated on the central plateau of Zimbabwe, which is about three times the size of England.

Bulawayo, meaning 'place of slaughter', was the royal kraal of the legendary Ndebele kings in former times. Zimbabwe's second largest city, Bulawayo is noted for its exceptionally wide streets which were originally designed to allow turning space for a full span of oxen.

Mosi-oo-Tunya – the 'Smoke that Thunders', derived from the towering column of spray when the Zambezi River runs high – is the name that Zimbabwe's local people have given to the awesome natural splendour of the Victoria Falls.

Lake Kariba is also on the Zambezi River, a unique place of outlandish beauty. It is a great man-made inland sea, nestled among submerged mountains, with the eerie, bone-white limbs of dead trees still reaching up from the water. These are the only remaining relics of the wilderness that was inundated by building a dam for the production of hydroelectric power in the late 1950s.

Just 30km from the town of Masvingo and eight kilometres by road from Lake Mutirikwi (formerly Lake Kyle) are some of the most extraordinary relics of man-made structures in Africa. Formed of regular, rectangular granite stones packed into impeccable dry-stone walling, the ruins of Great Zimbabwe are awe-inspiring.

Golfing Highlights

Zimbabwe is a sports-mad country, and golf is high on the list of desirable pursuits among the mainly peace-loving people of this sun-drenched nation. The fine weather allows for golf virtually every day of the year, and the origin of the game in the country dates back to the late 19th century when British colonials started to fashion courses out of the bush.

IN AND AROUND HARARE

Borrowdale Brook

This is a new development set in the tranquil hills north of Harare, and is Zimbabwe's first golf and housing estate. The 18-hole course, designed by Peter Matkovich and endorsed by Nick Price, opened for play in 1998 and is, according to Matkovich, "a classic design, very playable with a multitude of options on each hole – very much a thinking player's course." For reservations call +263 (4) 860 489.

OPENING PIC: Rafting in the Batoka Gorge in the shadow of the Victoria Falls is a truly unique experience.

RIGHT: A visit to Rhodes' memorial at World's View in the Matopo National Park near Bulawayo is well worth the effort.

Chapman Golf Club

A picturesque, tree-lined course, the exceptionally good Chapman layout, 1km east of the city centre, has water hazards at 10 of its 18 holes, along with a couple of resident crocodiles. Peter Matkovich has recently done some work at Chapman, replacing the notoriously grainy grass on the greens with smooth, true-running bent grass. He has given the whole course a better quality finish and installed state-of-the-art drainage, which comes in useful after a wild, summer rainstorm. Reservations can be made on +263 (4) 736 949 or 747 487.

don't miss

A trip to the Great Zimbabwe ruins near the town of Masvingo, is reason enough to visit Zimbabwe. Enough said!

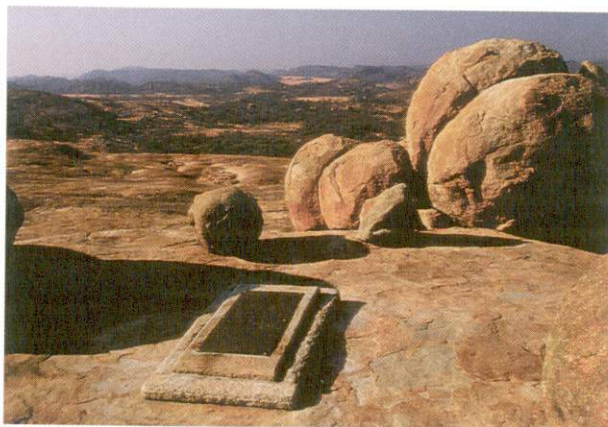
Royal Harare

One of only five courses in southern Africa to be granted 'Royal' status, this classy Zimbabwe club with its elegant clubhouse is comfortably spread out on a large tract of land 3km from the city centre in Harare's green and very spacious northern suburbs. The national botanical gardens are just across the road from the club, but the course itself is a good advertisement for the beautiful indigenous trees and shrubs of the region.

A demanding, fine championship course, which is always in immaculate condition, Royal Harare has recently been upgraded and remodelled by Nick Price. A new strain of bent grass has been planted on the greens and this has turned out to be the perfect putting surface. Traditionally, the hosting of the Zimbabwe Open has been shared by Royal Harare and nearby Chapman Golf Club, the tournament alternating between the two venues. This course boasts 1 900 members as has been voted one of the best 50 courses outside the US for a number of years. The course can be reached on +263 (4) 702 920 or 702 929.

Ruwa Country Club

On the national road from Harare to Mutare, Ruwa is 27km from Harare city centre and is a delightful country course. The boulders, indigenous trees and smell of the African bush make playing here a great experience.



10 best reasons to visit

- The granite outcrops and mighty boulders of the Matopo National Park are conveniently close to Bulawayo.
- No visit will be complete without a visit to the Victoria Falls.
- The watery expanse of Lake Kariba has numerous houseboats for hire for a game-watching experience with a difference – the tiger fishing on the lake is legendary too.
- The ruins at Great Zimbabwe are equalled for mystery in Africa only by the Egyptian pyramids.
- Hwange National Park is one of the world's finest game reserves.
- The mysterious Chinhayi caves, north west of Harare, provides tourists the opportunity to explore the subterranean caverns.
- The Mana Pools National Park in the extreme northern parts of Zimbabwe allows visitors to explore on foot.
- Zimbabwe is a very affordable destination for most tourists.
- The people are renowned for their friendliness.
- The stunning mountain scenery, superb fly fishing and the peerless Leopard Rock Hotel make the Eastern Highlands one of Zimbabwe's most visited regions.

RIGHT: A couple of days on a houseboat on Lake Kariba is a novel and affordable way to spend part of your vacation.

A huge rock comes into play at the short par-3 seventh, which is aptly named Rocky Horror. There is a charming thatch-roofed clubhouse. Bookings can be made on +263 (7) 62 376 or 62 374.

Warren Hills

An 18-hole parkland course at Old Kadoma Road, Warren Hills is a scant 5km from Harare. Nick Price was a member here in his junior days. Reservations can be made on +263 (4) 29 875/6.

Wingate Park

Wingate offers an 18-hole parkland layout only 5km from the centre of Harare. Mature trees lining the fairways make for some exacting driving holes. The course can be reached on +263 (4) 882 224.

ALSO RECOMMENDED

The Country Club, Brompton Road, Highlands (4km from city centre): +263 (4) 732 128. Harare South Country Club (on the national road from Harare to Masvingo, 23km from the city centre): +263 (4) 675 84. Norton Country Club (a pleasant country course 47km south of Harare): +263 (6) 229 373.

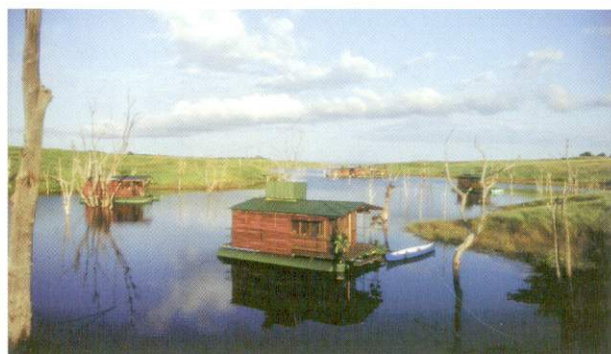
REST OF ZIMBABWE

Bulawayo Country Club

This is an 18-hole, slightly undulating parkland course, which also has tennis, snooker and volleyball facilities and is situated 5km from Bulawayo. Bookings can be made on +263 (4) 947 699.

Bulawayo Golf Club

This 18-hole parkland course is the oldest golf club in Zimbabwe, founded in 1895. Gary Player rates the very tight 15th as one of the great par-3's of Africa. The club is on the outskirts of the city centre, off Park Road Extension. Reservations can be made on +263 (4) 961 428.



Claremont Golf Club

Nine holes with a lot of character, the Claremont course offers spectacular views and some memorable holes. It is sign posted just past Juliusdale in the Eastern Highlands, on the road from Rusape to Nyanga. The Montclair Casino Hotel is situated only 5km away with the renowned Troutbeck Inn only also in the vicinity – about 30km away. The course can be contacted on +263 (2) 9469.

Elephant Hills

Here is golf in a truly African setting. The spray of the famous Victoria Falls can often be seen while playing the course, and in places this 5 205 metre layout is only a wedge away from the mighty Zambezi River. The wildlife here is as spectacular and varied as it is prolific. At dusk, impala and duiker are plentiful and lion and elephant have been known to venture onto the course. The course itself is a modification of Gary Player's ambitious 1977 design, the original dream coming true for Player, whose vision had been to build Africa's longest and toughest layout. The course has now been considerably shortened and with wide, generous fairways it has become more user-friendly. It adjoins the superb Elephant Hills Inter-Continental Hotel, which also offers squash and fishing to the enthusiast. The resort can be contacted on +263 (1) 34 793/5/6/7.

Gweru Golf Club

The Gweru Golf Club boasts an 18-hole layout, with some deceptive holes